

[www.ersatzteil-service.de](http://www.ersatzteil-service.de)

[www.ersatzteilplan.de](http://www.ersatzteilplan.de)

# IBEA

| Modello n. | Serie dal n. |
|------------|--------------|
| IB-4221F   | 001          |
| IB-4233F   | 001          |
| IB-4235F   | 001          |
| IB-4237F   | 001          |
| IB-4238F   | 001          |

Stampato n. P5090169

**LISTA RICAMBI**

**SPARE PARTS LIST**

**ERSATZTEILLISTE**

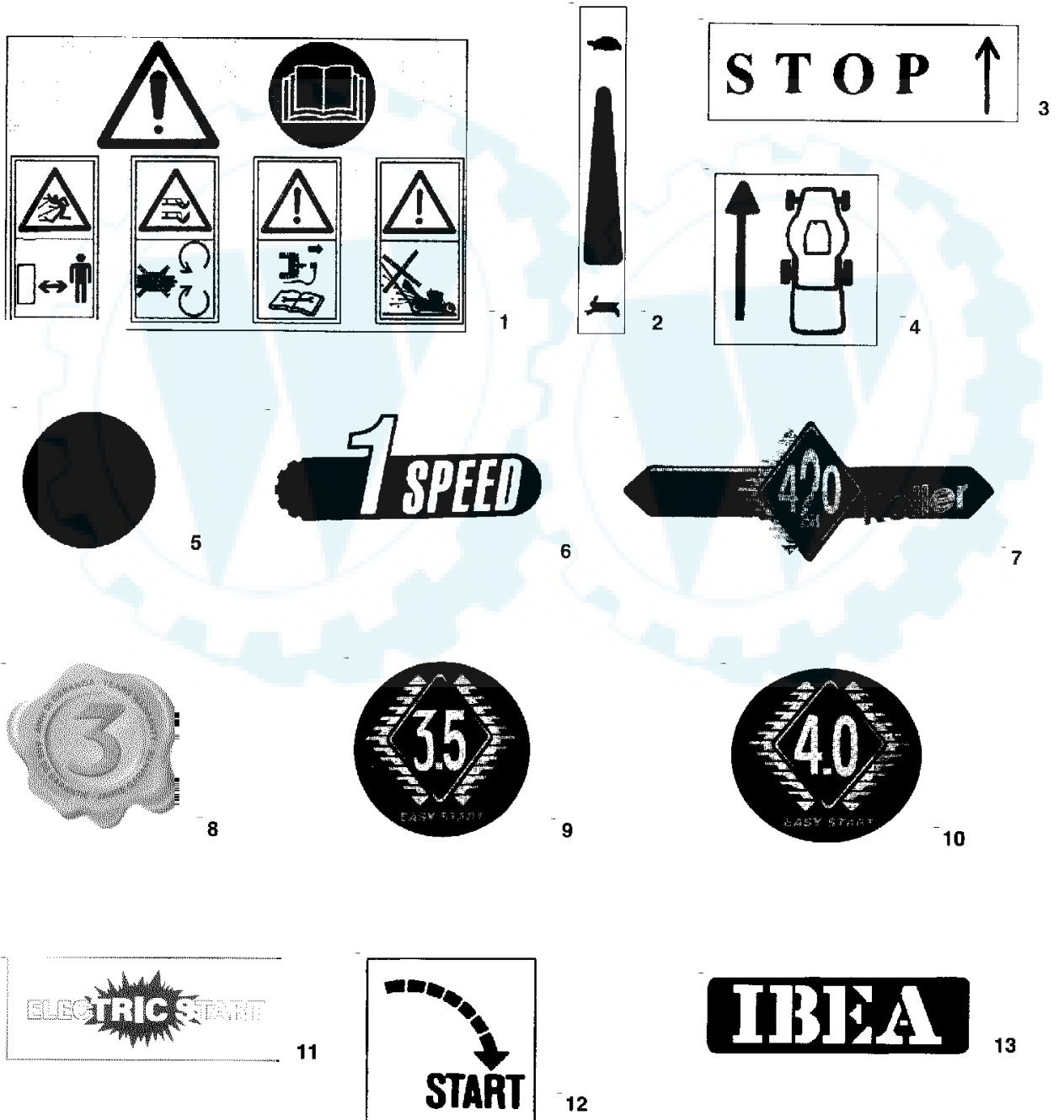
**LISTE DES PIECES DE RECHANGE**



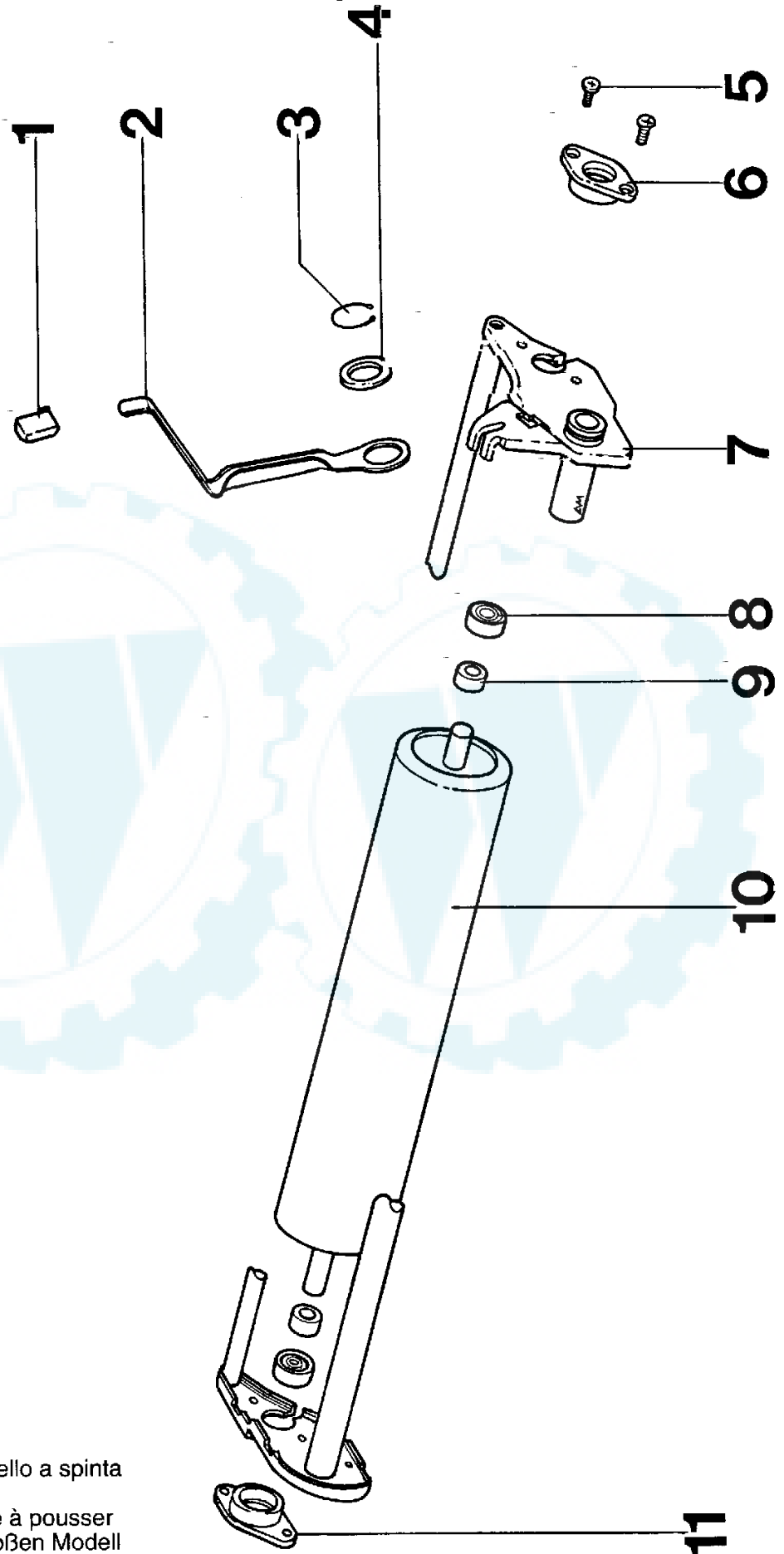
**SERIE 420 A RULLO**

[Ihr Ersatzteilspezialist im Internet](#)

| REF. N° | PART. N° | QTY | DESCRIZIONE        | DESCRIPTION        | DESCRIPTION   | BESCHREIBUNG        |
|---------|----------|-----|--------------------|--------------------|---------------|---------------------|
| 1       | P5140334 | 1   | DECALCO            | DECAL              | MARQUAGE      | AUFKLEBER           |
| 2       | P5140552 | 1   | DECALCO            | DECAL              | MARQUAGE      | AUFKLEBER           |
| 3       | P5140573 | 1   | DECALCO            | DECAL              | MARQUAGE      | AUFKLEBER           |
| 4       | P5140574 | 1   | DECALCO            | DECAL              | MARQUAGE      | AUFKLEBER           |
| 5       | P5140138 | 2   | DECALCO            | DECAL              | MARQUAGE      | AUFKLEBER           |
| 6       | P5140337 | 1   | DECALCO            | DECAL              | MARQUAGE      | AUFKLEBER           |
| 7       | P5140558 | 1   | DECALCO            | DECAL              | MARQUAGE      | AUFKLEBER           |
| 8       | P5140531 | 1   | DECALCO            | DECAL              | MARQUAGE      | AUFKLEBER           |
| 9       | P5140536 | 1   | DECALCO            | DECAL              | MARQUAGE      | AUFKLEBER           |
| 10      | P5140537 | 1   | DECALCO            | DECAL              | MARQUAGE      | AUFKLEBER           |
| 11      | P5140109 | 1   | DECALCO            | DECAL              | MARQUAGE      | AUFKLEBER           |
| 12      | P5140110 | 1   | DECALCO            | DECAL              | MARQUAGE      | AUFKLEBER           |
| 13      | P5140334 | 1   | DECALCO            | DECAL              | MARQUAGE      | AUFKLEBER           |
| 14      | P5110008 | 1   | CHIAVE TUBO        | KEY                | CLEF          | SCHLÜSSEL           |
| 15      | P5090171 | 1   | MANUALE ISTRUZIONI | INSTRUCTION MANUAL | MODE D'EMPLOI | BEDIENUNGSANLEITUNG |



| REF. N° | PART. N°  | QTY | DESCRIZIONE             | DESCRIPTION                     | DESCRIPTION                    | BESCHREIBUNG                      |
|---------|-----------|-----|-------------------------|---------------------------------|--------------------------------|-----------------------------------|
|         | P01011056 |     | TELAIO CESTELLO         | BAG FRAME                       | CADRE                          | GESTELL                           |
| 2       | P3160013  |     | SACCO RACCOGLIERBA      | GRASS BAG                       | SAC DE RAMASSAGE               | GRASFANGSACK                      |
| 3       | P00010056 |     | CESTELLO COMPLETO       | GRASS BAG ASS.Y                 | SAC DE RAMASSAGE COMPI         | GRASFANGSACK KOMP.                |
| 4       |           |     | MOTORE                  | ENGINE                          | MOTEUR                         | MOTOR                             |
| 5       | 1090001A1 |     | CHIAVETTA               | KEY                             | CLAVETTE                       | SCHEIBENFEDER                     |
| 6       | P1050011  | 1   | DADO                    | NUT                             | ÉCROU                          | MUTTER                            |
| 7       | P1010061  | 2   | VITE                    | SCREW                           | VIS                            | SCHRAUBE                          |
| 8       | P2020089  | 1   | CARTER COPRICINGHIA     | BELT COVER                      | COUVERCLE DE COURROIRE         | KEILRIEMENADBECKUNG               |
| 9       | P1060004  | 2   | FISSATORE               | WASHER                          | RONDELLE                       | SCHEIBE                           |
| 10      | P1010108  | 5   | VITE                    | SCREW                           | VIS                            | SCHRAUBE                          |
| 11      | P1010109  |     | VITE                    | SCREW                           | VIS                            | SCHRAUBE                          |
| 12      | P2020113  |     | CARTER LATERALE         | R.H. HOUSING                    | COUVERCLE DROITE               | ABDECKUNG R.                      |
| 13      | P02005256 | 1   | SCocca                  | DECK                            | CHÂSSIS                        | GEHÄUSE                           |
| 14      | P2020166  | 3   | BUSSOLA                 | BUSHING                         | DOUILLE                        | BÜCHSE                            |
| 15      | 1020009A1 | 3   | RONDELLA                | WASHER                          | RONDELLE                       | SCHEIBE                           |
| 16      | P1020063  | 3   | RONDELLA                | WASHER                          | RONDELLE                       | SCHEIBE                           |
| 17      | P1050011  | 2   | DADO                    | NUT                             | ÉCROU                          | MUTTER                            |
| 18      | P1020080  | 3   | RONDELLA                | WASHER                          | RONDELLE                       | SCHEIBE                           |
| 19      | P1010098  | 1   | VITE                    | SCREW                           | VIS                            | SCHRAUBE                          |
| 19      | P1010101  | 2   | VITE                    | SCREW                           | VIS                            | SCHRAUBE                          |
| 20      | P3040086  | 2   | PERNO                   | PIN                             | GOUILLE                        | STIFT                             |
| 21      | P01030366 | 1   | ASSALE ANTERIORE        | FRONT AXLE                      | ESSIEU ANT.                    | FORDERACHSE                       |
| 22      | P2020077  | 1   | POMELLO LEVA            | KNOB                            | POIGNÉE                        | KNOPF                             |
| 23      | P00046066 | 1   | LEVA ANTERIORE          | FRONT LEVER                     | LEVIER ANT.                    | RADHEBEL                          |
| 24      | P01032156 | 1   | PIASTRA                 | PLATE                           | PLAQUE                         | PLATTE                            |
| 25      | P1020064  | 2   | RIVETTO                 | STUD                            | RIVET                          | NIET                              |
| 26      | P01032056 | 1   | PIASTRA                 | PLATE                           | PLAQUE                         | PLATTE                            |
| 27      | P3040087  | 2   | BUSSOLA                 | BUSHING                         | DOUILLE                        | BÜCHSE                            |
| 28      | P2020114  | 1   | CARTER LATERALE         | L.H. HOUSING                    | COUVERCLE GAUCHE               | ABDECKUNG L.                      |
| 29      | P3020011  | 1   | MOLLA                   | SPRING                          | RESSORT                        | FEDER                             |
| 30      | P01027066 | 1   | ASTINA                  | ROD                             | TIGE                           | STAB                              |
| 31      | P2020109  | 1   | PORTELLO                | SHIELD                          | PROTECTION                     | SCHUTZ                            |
| 32      | P4050020  | 1   | LAMA                    | BLADE                           | LAME                           | MESSER                            |
| 33      | 1110002A1 | 1   | MOLLA                   | SPRING                          | RESSORT                        | FEDER                             |
| 34      | P1010128  | 1   | VITE LAMA               | BLADE SCREW                     | VIS DE COUTEAU                 | MESSERSCHRAUBE                    |
| 35      | P1020067  | 1   | RONDELLA                | WASHER                          | RONDELLE                       | SCHEIBE                           |
| 36      | 2020050A1 | 2   | POMELLO                 | KNOB                            | POIGNÉE                        | MUTTER                            |
| 37      | P3040099  | 1   | DISTANZIALE             | SPACER                          | DOUILLE                        | DISTANZBÜCHSE                     |
| 38A     | P3040253  | 1   | BUSSOLA LAMA, A SPINTA  | BLADE BUSHING, PUSH MODEL       | DOUILLE DE LAME, MOD. POUSSÉ   | MESSERBÜCHSE, HANDGESTOßEN MODELL |
| 38B     | P3040102  | 1   | BUSSOLA LAMA, SEMOVENTE | BLADE BUSHING, SELF-PROP. MODEL | DOUILLE DE LAME, MODÈLE TRACTÉ | MESSERBÜCHSE, MODELL MIT RADANTR. |
| 39A     |           |     | PER 4237F/4221F/4238F   | FOR 4237F/4221F/4238F           | POUR 4237F/4221F/4238F         | FÜR 4237F/4221F/4238F             |
| 39B     |           |     | PER 4233F/4235F         | FOR 4233F/4235F                 | POUR 4233F/4235F               | FÜR 4233F/4235F                   |
| 40      | P1020060  | 2   | RONDELLA                | SPRING WASHER                   | RONDELLE ÉLASTIQUE             | FEDERSCHEIBE                      |
| 41      | P2020088  | 2   | DISTANZIALE             | SPACER                          | RONDELLE                       | DISTANZBÜCHSE                     |
| 42      | P2020377  | 2   | COPRIRUOTA              | WHEEL COVER                     | COUVERCLE DE ROUE              | RADABDECKUNG                      |
| 43      | P3030013  | 4   | CUSCINETTO              | BEARING                         | PALIER                         | LAGER                             |
| 44      | P2020378  | 2   | CERCHIONE               | HUB                             | JANTE                          | FELGE                             |
| 45      | P2020078  | 2   | COPERTONE               | TYRE                            | PNEU                           | REIFEN                            |
| 46      | P2080002  | 2   | RUOTA                   | WHEEL ASS.Y                     | ROUE COMPL.                    | RAD KOMP.                         |
| 47      | 1020007A1 | 2   | RONDELLA                | WASHER                          | RONDELLE                       | SCHEIBE                           |
| 48      | 1010018A1 | 2   | VITE                    | SCREW                           | VIS                            | SCHRAUBE                          |
| 49      | P2020062  | 2   | COPRIMOZZO              | COVER                           | COUVERCLE                      | DECKEL                            |
| 50      | P2020088  | 2   | DISTANZIALE             | SPACER                          | RONDELLE                       | DISTANZBÜCHSE                     |
| 51      | 1020007A1 | 2   | RONDELLA                | WASHER                          | RONDELLE                       | SCHEIBE                           |
| 52      | 1010018A1 | 2   | VITE                    | SCREW                           | VIS                            | SCHRAUBE                          |
| 53      | P2020220  | 2   | COPRIMOZZO              | WHEEL COVER                     | COUVERCLE DE ROUE              | RADABDECKUNG                      |
| 54      | P2020213  | 2   | RUOTA                   | WHEEL                           | ROUE                           | RAD                               |
| 55      | 1020014A1 | 2   | RONDELLA                | WASHER                          | RONDELLE                       | SCHEIBE                           |
| 56      | P2020117  | 2   | GALLETTA                | KNOB                            | POIGNÉE                        | MUTTER                            |
| 57      | 1010026A1 | 2   | VITE                    | SCREW                           | VIS                            | SCHRAUBE                          |
| 58      | P02070257 | 2   | STEGOLA INF.            | LOWER HANDLEBAR                 | GUIDON INF.                    | LENKERUNTERTEIL                   |
| 59      | P2020165  | 1   | CAPOTTINA               | ENGINE COVER                    | COUVERCLE MOTEUR               | MOTORABDECKUNG                    |
| 60      | P1010154  | 1   | VITE                    | SCREW                           | VIS                            | SCHRAUBE                          |



Tav. 2

Assale posteriore, modello a spinta  
Rear axle, push model  
Essieux arrière, modèle à pousser  
Hinterachse, handgestoßen Modell

[www.ersatzteil-service.de](http://www.ersatzteil-service.de)

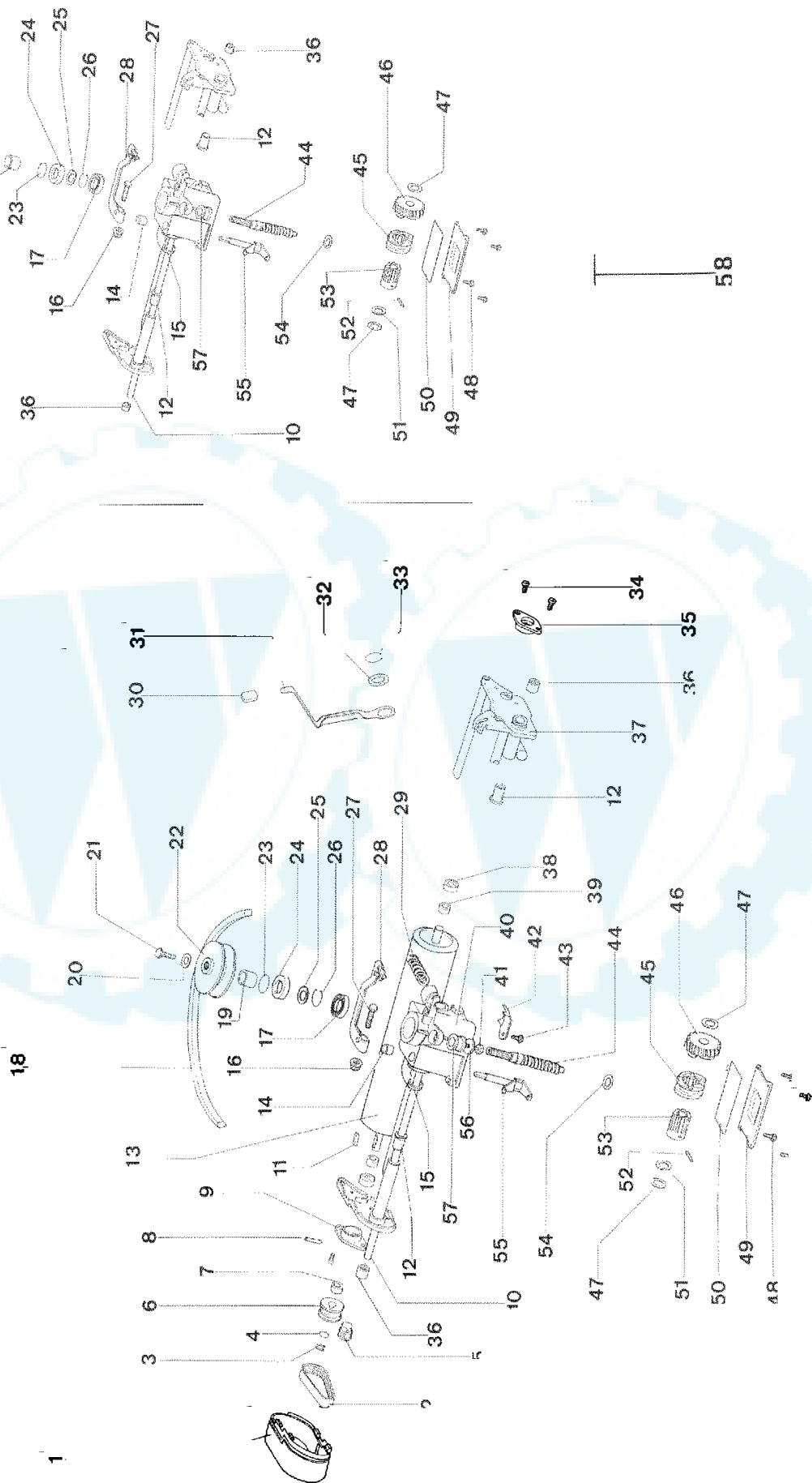
[www.ersatzteilplan.de](http://www.ersatzteilplan.de)

| REF. N° | PART. N°  | QTY | DESCRIZIONE         | DESCRIPTION     | DESCRIPTION          | BESCHREIBUNG |
|---------|-----------|-----|---------------------|-----------------|----------------------|--------------|
| 1       | P0020077  | 1   | POMELLO             | KNOB            | POIGNÉE              | KNOF         |
| 2       | P00066166 | 1   | LEVA.FE.CHE.NE.M    | REAR LEVER      | LEVIER ARRIERE       | RADHEBEL     |
| 3       | P1070008  | 1   | SEGER               | CIRCLIP         | SEGER                | SEGER        |
| 4       | P1020050  | 1   | BONDELLA            | SPACER          | DOILLE               | ABSTANDSTÜCK |
| 5       | P1010070  | 4   | VITE                | SCREW           | VI                   | SCHRAUBE     |
| 6       | P2020111  | 1   | SUPPORTO CUSCINETTO | BEARING SUPPORT | SUPPORT DE ROULEMENT | HALTER       |
| 7       | P01028059 | 1   | SUPPORTO RULLO      | ROLLER MOUNTING | SUPPORT DE ROULEAU   | HALTER       |
| 8       | P2100115  | 2   | DIAGONALI           | BEARING         | RAUER                | LAGER        |
| 9       | P0340105  | 2   | DISTANZALE          | SPACER          | ENTRETOISE           | DISTANZRING  |
| 10      | P01011059 | 1   | RULLO               | ROLLER          | ROULEAU              | ROLLE        |
| 11      | P2020110  | 1   | SUPPORTO CUSCINETTO | BEARING SUPPORT | SUPPORT DE ROULEMENT | HALTER       |

Ihr Ersatzteilspezialist im Internet

Tav. 3

Assale posteriore e trasmissione, modello a trazione  
Rear axle and gear box, self-propelled model  
Essieux arrière et transmission, modèle tracté  
Hinterachse und Getriebe, Modell mit Radantrieb



| REF. N° | PART. N°  | QTY | DESCRIZIONE         | DESCRIPTION     | DESCRIPTION          | BESCHREIBUNG       |
|---------|-----------|-----|---------------------|-----------------|----------------------|--------------------|
| 1       | P3060053  |     | CARTER              | COVER           | COUVERCLE            | ADBECKUNG          |
| 2       | P3010028  |     | CINGHIA             | BELT            | CORROIRE             | RIEMEN             |
| 3       | 1070001A1 |     | SEEGER              | CIRCLIP         | SEEGER               | SEEGER             |
| 4       | 1020020A1 |     | RONDELLA            | WASHER          | RONDELLE             | SCHEIBE            |
| 5       | P3040303  |     | PULEGGIA            | PULLEY          | POULIE               | RIEMENSCHLEIBE     |
| 6       | P3040302  | 1   | PULEGGIA            | PULLEY          | POULIE               | RIEMENSCHLEIBE     |
| 7       | P3040111  | 1   | DISTANZIALE         | SPACER          | ENTRETOISE           | DISTANZRING        |
| 8       | P1080007  | 1   | SPINA               | PIN             | GOUPILLE             | STIFT              |
| 9       | P2020110  | 1   | SUPPORTO CUSCINETTO | BEARING SUPPORT | SUPPORT DE ROULEMENT | HALTER             |
| 10      | P3040106  | 1   | ALBERO TRAZIONE     | TRACTION SHAFT  | ARBRE DE TRACTION    | ANTRIEBSWELLE      |
| 11      | P1090004  | 1   | CHIAVETTA           | SPLINE          | CLAVETTE             | SCHIEBENFEDER      |
| 12      | P2020070  | 2   | BOCCOLA             | BUSHING         | DOUILLE              | BÜCHSE             |
| 13      | P01016060 | 1   | RULLO               | ROLLER          | ROULEAU              | ROLLE              |
| 14      | P3170012  | 1   | ANELLO DI TENUTA    | OIL SEAL        | JOINT D'ARBRE        | WELLENDICHTRING    |
| 15      | P3170011  | 2   | ANELLO DE TENUTA    | OIL SEAL        | JOINT D'ARBRE        | WELLENDICHTRING    |
| 16      | 1050003A1 |     | DADO                | NUT             | ÉCROU                | MUTTER             |
| 17      | P3030010  |     | CUSCINETTO          | BEARING         | PALIER               | LAGER              |
| 18      | P3010013  |     | CINGHIA             | BELT            | COURROIE             | RIEMEN             |
| 19      | P3040049  |     | BUSSOLA             | BUSHING         | DOUILLE              | BÜCHSE             |
| 20      | 1020007A1 |     | RONDELLA            | WASHER          | RONDELLE             | SCHEIBE            |
| 21      | 1010018A1 |     | VITE                | SCREW           | VIS                  | SCHRAUBE           |
| 22      | P3040048  |     | PULEGGIA            | PULLEY          | POULIE               | RIEMENSCHLEIBE     |
| 23      | P3170013  |     | O-RING              | SPACER          | DOUILLE              | ABSTANDSSTÜCK      |
| 24      | P3170010  |     | ANELLO DI TENUTA    | OIL SEAL        | JOINT D'ARBRE        | WELLENDICHTRING    |
| 25      | P1020051  |     | RONDELLA            | WASHER          | RONDELLE             | SCHEIBE            |
| 26      | P1070004  |     | SEEGER              | CIRCLIP         | SEEGER               | SEEGER             |
| 27      | P1010075  |     | VITE                | SCREW           | VIS                  | SCHRAUBE           |
| 28      | P4070011  |     | LEVA TRAZIONE       | LEVER           | LEVIER               | HEBEL              |
| 29      | P3020010  |     | MOLLA               | SPRING          | RESSORT              | FEDER              |
| 30      | P2020077  |     | POMELLO             | KNOB            | POIGNÉE              | KNOPF              |
| 31      | P00046166 |     | LEVA POSTERIORE     | REAR LEVER      | LEVIER ARRIÈRE       | RADHEBEL           |
| 32      | P1020058  |     | RONDELLA            | SPACER          | DOUILLE              | ABSTANDSSTÜCK      |
| 33      | P1070008  | 1   | SEEGER              | CIRCLIP         | SEEGER               | SEEGER             |
| 34      | P1010070  | 4   | VITE                | SCREW           | VIS                  | SCHRAUBE           |
| 35      | P2020111  | 1   | SUPPORTO CUSCINETTO | BEARING SUPPORT | SUPPORT DE ROULEMENT | HALTER             |
| 36      | 3030003A1 | 2   | CUSCINETTO          | BEARING         | PALIER               | LAGER              |
| 37      | P01028060 | 1   | SUPPORTO RULLO      | ROLLER MOUNTING | SUPPORT DE ROULEAU   | HALTER             |
| 38      | P3030015  | 2   | CUSCINETTO          | BEARING         | PALIER               | LAGER              |
| 39      | P3040105  | 2   | DISTANZIALE         | SPACER          | ENTRETOISE           | DISTANZRING        |
| 40      | P00039199 |     | SCATOLA RIDUTTORE   | GEARBOX HOUSING | BOÎTE DE VITESSE     | GETRIEBE           |
| 41      | P1010104  |     | VITE                | SCREW           | VIS                  | SCHRAUBE           |
| 42      | P4030010  |     | COPERCHIETTO        | COVER           | COUVERCLE            | DECKEL             |
| 43      | P1010076  |     | VITE                | SCREW           | VIS                  | SCHRAUBE           |
| 44      | P3040042  |     | VITE SENZA FINE     | WORM GEAR       | VIS SANS FIN         | SCHNECKE           |
| 45      | P00038099 | 1   | INNESTO             | SELECTOR COLLAR | MANCHON              | SCHALTBÜCHSE       |
| 46      | P00038199 | 1   | RUOTA ELICOIDALE    | WORM WHEEL      | ROUE POUR VIS S. FIN | SCHNECKENRAD       |
| 47      | 1020020A1 | 2   | RONDELLA            | WASHER          | RONDELLE             | SCHEIBE            |
| 48      | P1010076  | 4   | VITE                | SCREW           | VIS                  | SCHRAUBE           |
| 49      | P4110001  | 1   | COPERCHIO           | COVER           | COUVERCLE            | DECKEL             |
| 50      | P3170014  | 1   | O-RING              | O-RING          | JOINT TORIQUE        | GUMMIRING          |
| 51      | P1020051  |     | RONDELLA            | WASHER          | RONDELLE             | SCHEIBE            |
| 52      | P1080007  |     | SPINA               | PIN             | GOUPILLE             | STIFT              |
| 53      | P3050030  |     | BUSSOLA             | BUSHING         | DOUILLE CANNELÉE     | KEILHÜLSE          |
| 54      | P1020054  |     | RONDELLA            | WASHER          | RONDELLE             | SCHEIBE            |
| 55      | P3040041  |     | FORCELLA            | FORK            | FOURCHE              | GABEL              |
| 56      | P1020054  |     | RONDELLA            | WASHER          | RONDELLE             | SCHEIBE            |
| 57      | P2040010  |     | ANTIVIBRANTE        | RUBBER TUBE     | TUBE DE PROTECTION   | SCHUTZHÜLLE        |
| 58      | P2090006  |     | RIDUTTORE COMPLETO  | GEARBOX ASS.Y   | RÉDUCTEUR COMPL.     | FAHRGETRIEBE KOMP. |

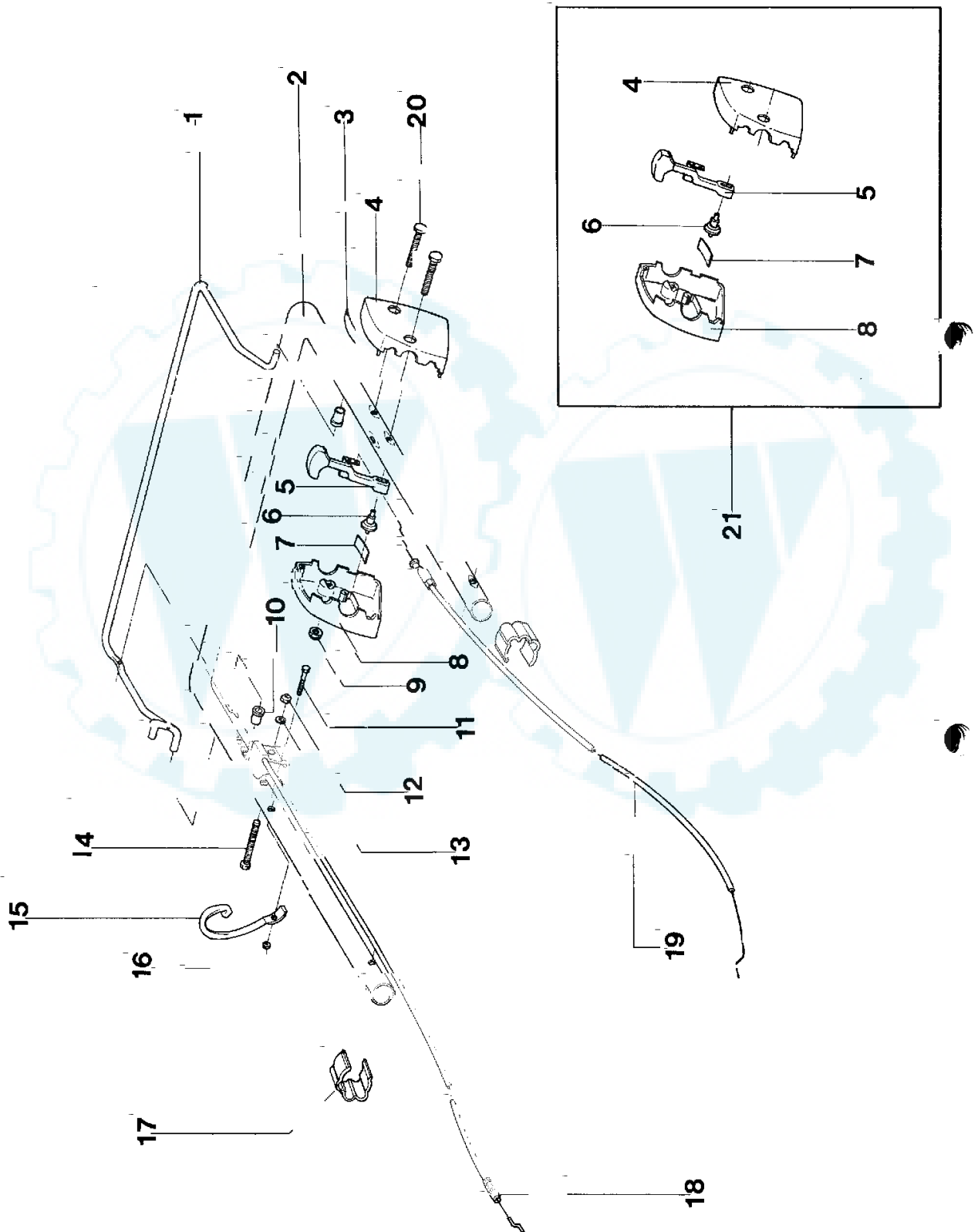
Tav. 4

Stegola superiore e comandi, modello a spinta IB-4233F

Upper handle and controls, push model IB-4233F

Guidon supérieur et éléments de commande, modèle à pousser IB-4233F

Lenkeroberteil und Bedienungselemente, handgestoßen Modell IB-4233F





[www.ersatzteil-service.de](http://www.ersatzteil-service.de)

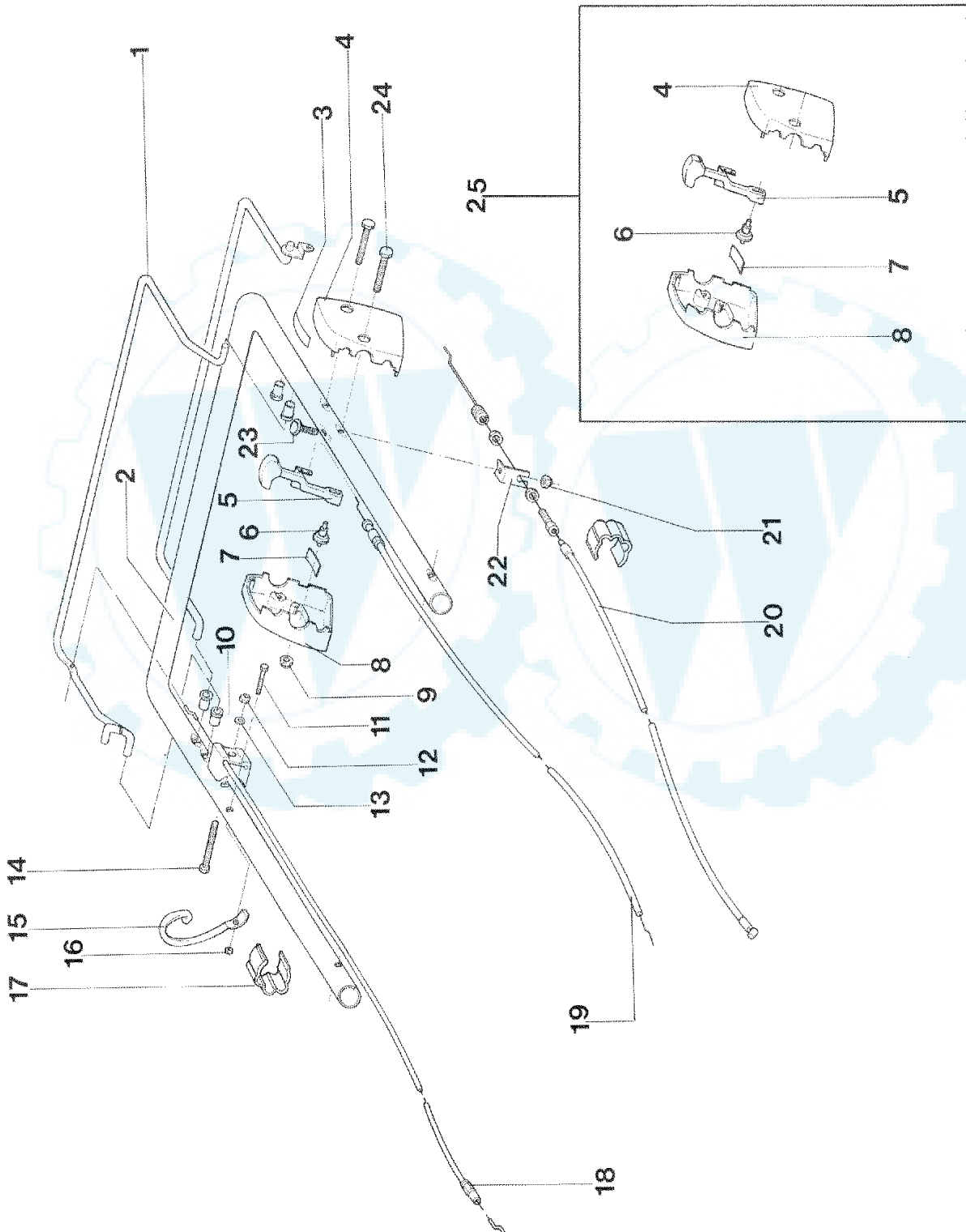
[www.ersatzteilplan.de](http://www.ersatzteilplan.de)

| REF.<br>N° | PART.<br>N° | QTY | DESCRIZIONE         | DESCRIPTION             | DESCRIPTION         | BESCHREIBUNG      |
|------------|-------------|-----|---------------------|-------------------------|---------------------|-------------------|
| 1          | P3060038VE  |     | LEVA SYSTEM 2       | SYSTEM 2 LEVER          | LEVIER SYSTEM 2     | SYSTEM 2 HEBEL    |
| 2          | P3120091VE  | 1   | STEGOLA SUPERIORE   | UPPER HANDLEBAR         | GUIDON SUPÉRIEUR    | OB. FÜHRUNGSHOLM  |
| 3          | P5140552    | 1   | DECALCO ACCELER.    | DECAL                   | MARQUAGE            | AUFKLEBER         |
| 4          | P2020107    | 1   | SCATOLA ACCELER. SX | L. H. HOUSING           | BOÎTE GAUCHE        | SCHALE L.         |
| 5          | P00065099   | 1   | LEVA ACCELERATORE   | THROTTLE LEVER          | LEVIER DE COMMANDE  | GASHEBEL          |
| 6          | P2020108    | 1   | NOTTOLINO           | BOLT                    | BOULON              | STIFT             |
| 7          | P4010059    | 2   | MOLLA               | SPRING                  | RESSORT             | FEDER             |
| 8          | P2020106    | 1   | SCATOLA ACC. DX     | R.H. HOUSING            | BOÎTE DROITE        | SCHALE R.         |
| 9          | 1050003A1   | 2   | DADO                | NUT                     | ÉCROU               | MUTTER            |
| 10         | P3040123    | 2   | BUSSOLA             | BUSHING                 | DOUILLE             | BÜCHSE            |
| 11         | P1010065    |     | VITE                | SCREW                   | VIS                 | SCHRAUBE          |
| 12         | 1050003A1   |     | DADO                | NUT                     | ÉCROU               | MUTTER            |
| 13         | 1020013A1   | 1   | RONDELLA            | WASHER                  | RONDELLE            | SCHLEIBE          |
| 14         | P1010203    | 1   | VITE                | SCREW                   | VIS                 | SCHRAUBE          |
| 15         | P01068343   | 1   | SUPPORTO A RICCILO  | STARTER HOLDER          | SUPPORT             | HALTER            |
| 16         | 1050002A1   | 1   | DADO                | NUT                     | ÉCROU               | MUTTER            |
| 17         | P2020080    | 2   | FERMA CAVO          | CLIP                    | CLIP                | HALTER            |
| 18         | P5010045    |     | CAVO SYSTEM 2       | SYSTEM 2 CABLE          | CÂBLE SYSTEM 2      | SYSTEM 2 KABEL    |
| 19         | P5020027    |     | CAVO ACCELERATORE   | THROTTLE CABLE          | CÂBLE DE GAZ        | GASKABEL          |
| 20         | P1010102    | 2   | VITE                | SCREW                   | VIS                 | SCHRAUBE          |
| 21         | P00035099   | 1   | SCATOLA ACC. COMPL. | THROTTLE HOUSING ASS. Y | BOÎTE DE GAZ COMPL. | GASGEHÄUSE KOMPL. |

Ihr Ersatzteilspezialist im Internet

Tav. 5

Stegola superiore e comandi, modello a trazione IB-4235F  
Upper handle and controls, self-propelled model IB-4235F  
Guidon supérieur et éléments de commande, modèle tracté IB-4235F  
Lenkeroberteil und Bedienungselemente, Modell mit Radantrieb IB-4235F



| REF. N° | PART. N°   | QTY | DESCRIZIONE          | DESCRIPTION             | DESCRIPTION         | BESCHREIBUNG      |
|---------|------------|-----|----------------------|-------------------------|---------------------|-------------------|
| 1       | P3060038VE | 1   | LEVA SYSTEM 2        | SYSTEM 2 LEVER          | LEVIER SYSTEM 2     | SYSTEM 2 HEBEL    |
| 2       | P3120091VE | 1   | STEGOLA SUPERIORE    | UPPER HANDLEBAR         | GUIDON SUPÉRIEUR    | OB. FÜHRUNGSHOLM  |
| 3       | P5140552   | 1   | DECALCO ACCELER.     | DECAL                   | MARQUAGE            | AUFKLEBER         |
| 4       | P2020107   | 1   | SCATOLA ACCELER. SX  | L. H. HOUSING           | BOÎTE GAUCHE        | SCHALE L.         |
| 5       | P00065099  | 1   | LEVA ACCELERATORE    | THROTTLE LEVER          | LEVIER DE COMMANDE  | GASHEBEL          |
| 6       | P2020108   | 1   | NOTTOLINO            | BOLT                    | BOULON              | STIFT             |
| 7       | P4010059   | 2   | MOLLA                | SPRING                  | RESSORT             | FEDER             |
| 8       | P2020106   | 1   | SCATOLA ACC. DX      | R.H. HOUSING            | BOÎTE DROITE        | SCHALE R.         |
| 9       | 1050003A1  | 2   | DADO                 | NUT                     | ÉCROU               | MUTTER            |
| 10      | P3040123   | 4   | BUSSOLA              | BUSHING                 | DOUILLE             | BÜCHSE            |
| 11      | P1010065   | 1   | VITE                 | SCREW                   | VIS                 | SCHRAUBE          |
| 12      | 1050003A1  | 1   | DADO                 | NUT                     | ÉCROU               | MUTTER            |
| 13      | 1020013A1  | 1   | RONDELLA             | WASHER                  | RONDELLE            | SCHLEIBE          |
| 14      | P1010203   | 1   | VITE                 | SCREW                   | VIS                 | SCHRAUBE          |
| 15      | P01068343  | 1   | SUPPORTO A RICCIOLIO | STARTER HOLDER          | SUPPORT             | HALTER            |
| 16      | 1050002A1  | 1   | DADO                 | NUT                     | ÉCROU               | MUTTER            |
| 17      | P2020080   | 3   | FERMA CAVO           | CLIP                    | CLIP                | HALTER            |
| 18      | P5010045   | 1   | CAVO SYSTEM 2        | SYSTEM 2 CABLE          | CÂBLE SYSTEM 2      | SYSTEM 2 KABEL    |
| 19      | P5020027   | 1   | CAVO ACCELERATORE    | THROTTLE CABLE          | CÂBLE DE GAZ        | GASKABEL          |
| 20      | P5010030   | 1   | CAVO TRAZIONE        | TRACTION CABLE          | CÂBLE DE TRACTION   | ANTRIEBSKABEL     |
| 21      | 1050003A1  | 1   | DADO                 | NUT                     | ÉCROU               | MUTTER            |
| 22      | P4010060   | 1   | PIASTRINA            | PLATE                   | PLAQUE              | PLATTE            |
| 23      | P1010078   | 1   | VITE                 | SCREW                   | VIS                 | SCHRAUBE          |
| 24      | P1010102   | 2   | VITE                 | SCREW                   | VIS                 | SCHRAUBE          |
| 25      | P00035099  | 1   | SCATOLA ACC. COMPL.  | THROTTLE HOUSING ASS. Y | BOÎTE DE GAZ COMPL. | GASGEHÄUSE KOMPL. |

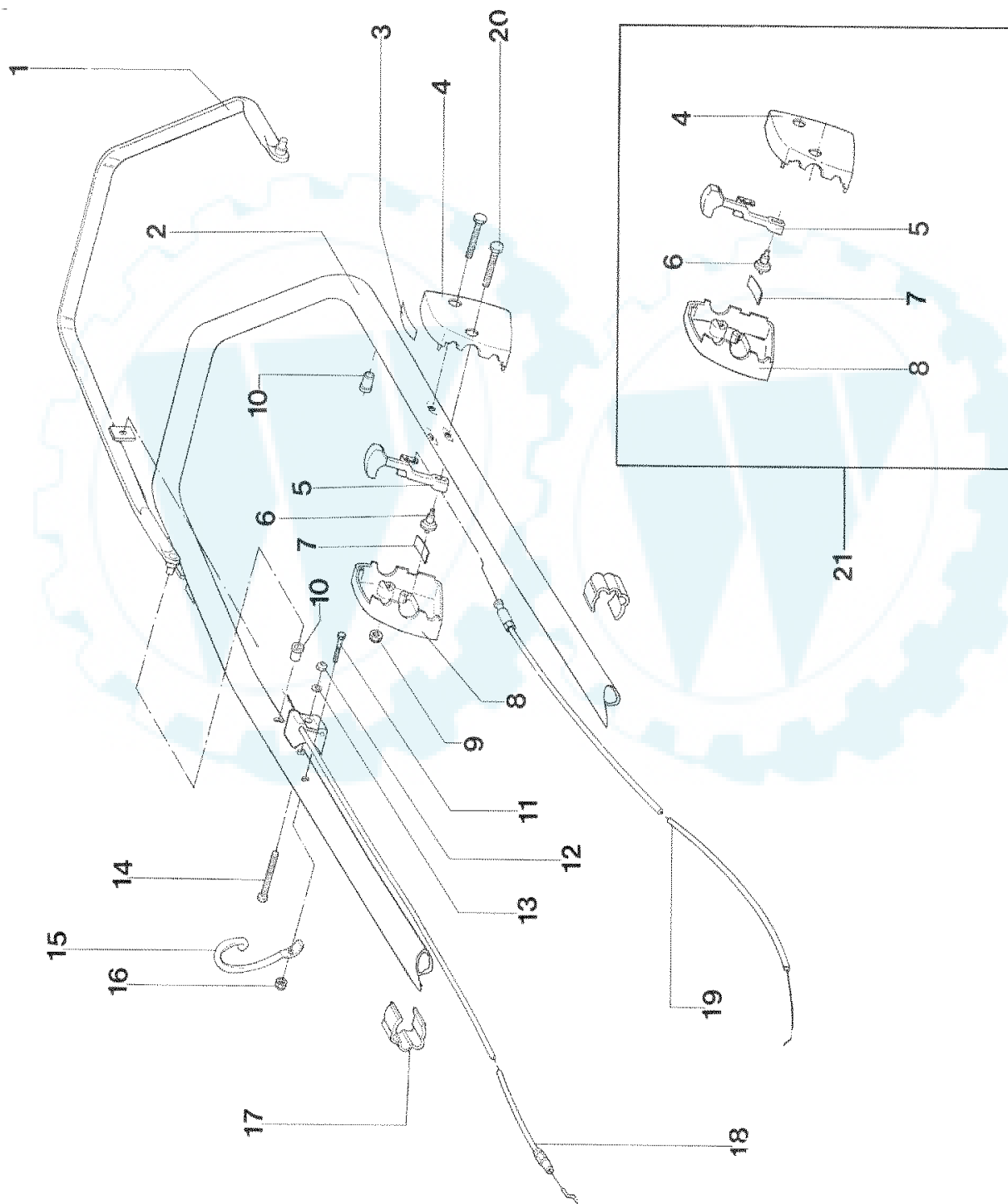
Tav. 6

Stegola superiore e comandi, modello a spinta IB-4221F

Upper handle and controls, push model IB-4221F

Guidon supérieur et éléments de commande, modèle à pousser IB-4221F

Lenkeroberteil und Bedienungselemente, handgestoßen Modell IB-4221F



[www.ersatzteil-service.de](http://www.ersatzteil-service.de)

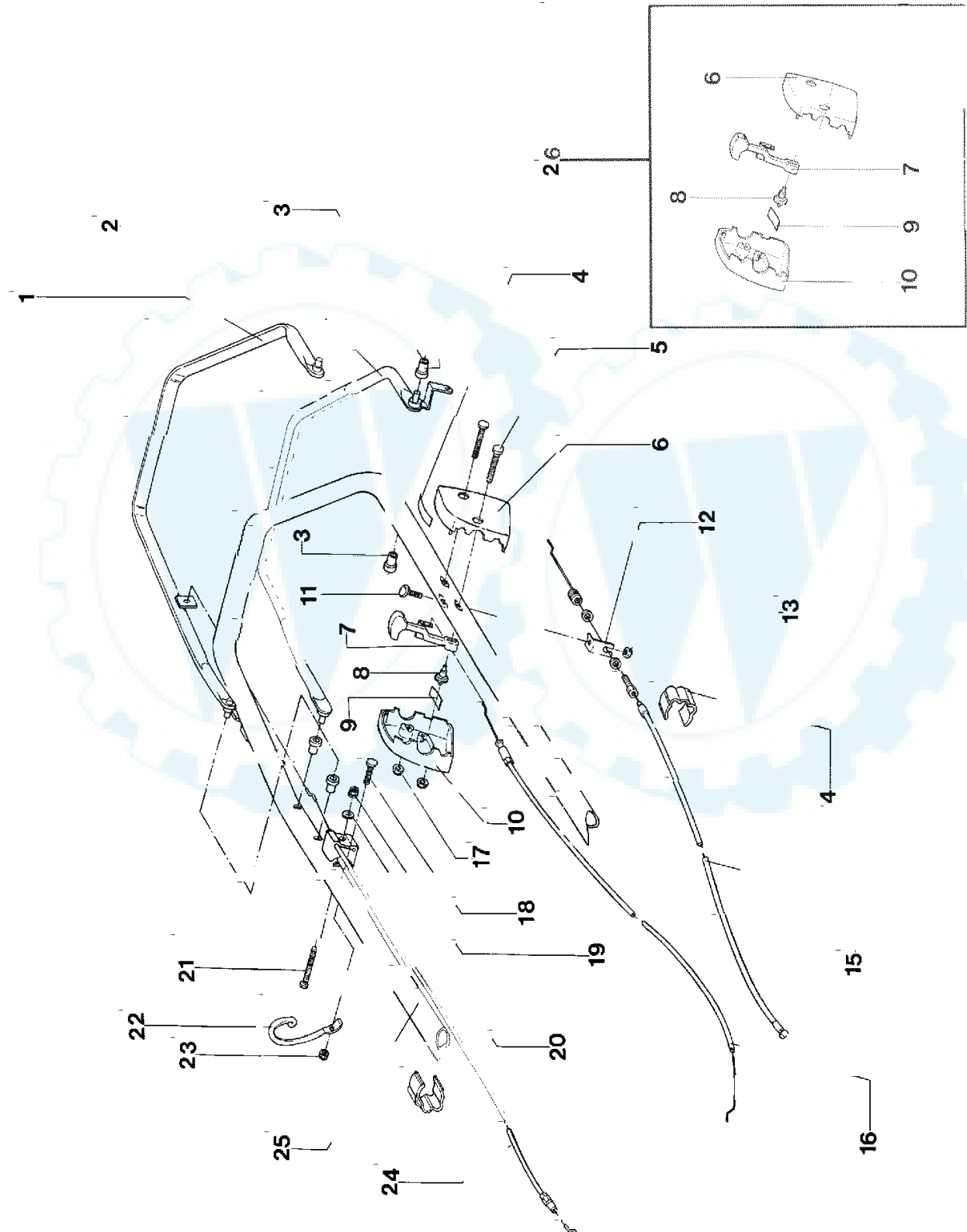
[www.ersatzteilplan.de](http://www.ersatzteilplan.de)

| REF. N° | PART. N°   | QTY | DESCRIZIONE         | DESCRIPTION             | DESCRIPTION         | BESCHREIBUNG      |
|---------|------------|-----|---------------------|-------------------------|---------------------|-------------------|
| 1       | P4080038VE |     | MANIGLIA SYSTEM 2   | SYSTEM 2 LEVER          | LEVIER SYSTEM 2     | SYSTEM 2 HEBEL    |
| 2       | P3120103VE |     | STEGOLA SUPERIORE   | UPPER HANDLE BAR        | GUIDON SUPÉRIEUR    | OB. FÜHRUNGSHOLM  |
| 3       | P5140552   |     | DECALCO ACCELER.    | DECAL                   | MARQUAGE            | AUFKLEBER         |
| 4       | P2020107   |     | SCATOLA ACCELER. SX | L. H. HOUSING           | BOÎTE GAUCHE        | SCHALE L.         |
| 5       | P00065099  |     | LEVA ACCELERATORE   | THROTTLE LEVER          | LEVIER DE COMMANDE  | GASHEBEL          |
| 6       | P2020108   | 1   | NOTTOLINO           | BOLT                    | BOULON              | STIFT             |
| 7       | P4010059   | 2   | MOLLA               | SPRING                  | RESSORT             | FEDER             |
| 8       | P2020106   | 1   | SCATOLA ACC. DX     | R.H. HOUSING            | BOÎTE DROITE        | SCHALE R.         |
| 9       | 1050003A1  | 2   | DADO                | NUT                     | ÉCROU               | MUTTER            |
| 10      | P2020153   | 2   | BUSSOLA             | BUSHING                 | DOUILLE             | BÜCHSE            |
| 11      | P1010065   | 1   | VITE                | SCREW                   | VIS                 | SCHRAUBE          |
| 12      | 1050003A1  | 1   | DADO                | NUT                     | ÉCROU               | MUTTER            |
| 13      | 1020013A1  | 1   | RONDELLA            | WASHER                  | RONDELLE            | SCHEIBE           |
| 14      | P1010203   | 1   | VITE                | SCREW                   | VIS                 | SCHRAUBE          |
| 15      | P01068343  | 1   | SUPPORTO A RICCIOLO | STARTER HOLDER          | SUPPORT             | HALTER            |
| 16      | 1050002A1  |     | DADO                | NUT                     | ÉCROU               | MUTTER            |
| 17      | P2020080   | 2   | FERMA CAVO          | CLIP                    | CLIP                | HALTER            |
| 18      | P5010059   | 1   | CAVO SYSTEM 2       | SYSTEM 2 CABLE          | CÂBLE SYSTEM 2      | SYSTEM 2 KABEL    |
| 19      | P5020032   |     | CAVO ACCELERATORE   | THROTTLE CABLE          | CÂBLE DE GAZ        | GASKABEL          |
| 20      | P1010102   | 2   | VITE                | SCREW                   | VIS                 | SCHRAUBE          |
| 21      | P00035099  |     | SCATOLA ACC. COMPL. | THROTTLE HOUSING ASS. Y | BOÎTE DE GAZ COMPL. | GASGEHÄUSE KOMPL. |

Ihr Ersatzteilspezialist im Internet

Tav. 7

Stegola superiore e comandi, modello a trazione IB-4237F  
Upper handle and controls, self-propelled model IB-4237F  
Guidon supérieur et éléments de commande, modèle tracté IB-4237F  
Lenkeroberteil und Bedienungselemente, Modell mit Radantrieb IB-4237F



[www.ersatzteil-service.de](http://www.ersatzteil-service.de)

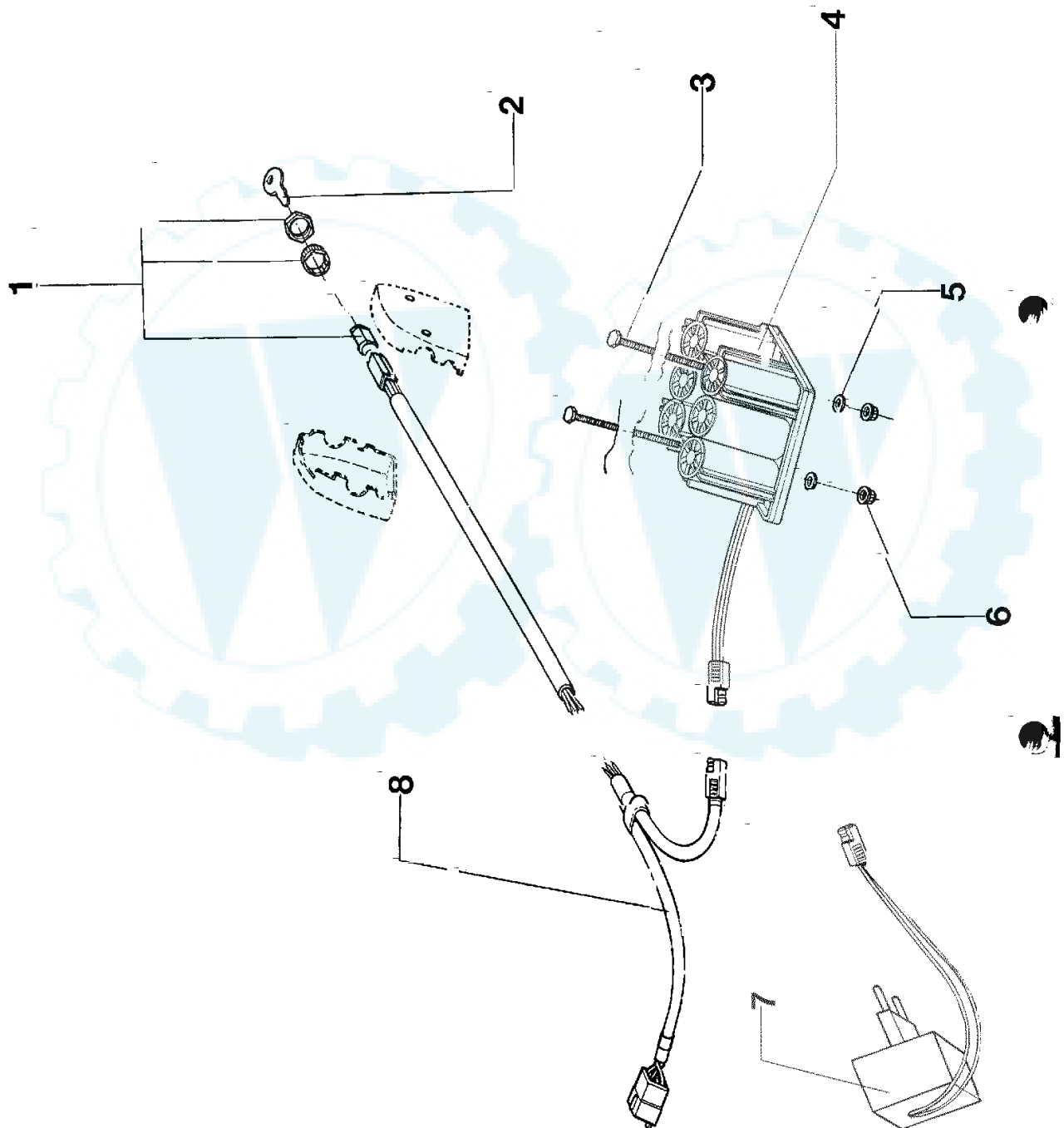
[www.ersatzteilplan.de](http://www.ersatzteilplan.de)

| REF. N° | PART. N°   | QTY | DESCRIZIONE          | DESCRIPTION             | DESCRIPTION         | BESCHREIBUNG      |
|---------|------------|-----|----------------------|-------------------------|---------------------|-------------------|
| 1       | P3060038VE | 1   | MANIGLIA SYSTEM 2    | SYSTEM 2 LEVER          | LEVIER SYSTEM 2     | SYSTEM 2 HEBEL    |
| 2       | P02042181  | 1   | MANIGLIA TRAZIONE    | TRACTION LEVER          | POIGNÉE DE TRACTION | ANTRIEBSHEBEL     |
| 3       | P2020153   | 4   | BUSSOLA              | BUSHING                 | DOUILLE             | BÜCHSE            |
| 4       | P5140552   | 1   | DECALCO ACCELER.     | DECAL                   | MARQUAGE            | AUFKLEBER         |
| 5       | P1010102   | 2   | VITE                 | SCREW                   | VIS                 | SCHRAUBE          |
| 6       | P2020107   | 1   | SCATOLA ACCELER. SX  | L. H. HOUSING           | BOÎTE GAUCHE        | SCHALE L.         |
| 7       | P00065099  | 1   | LEVA ACCELERATORE    | THROTTLE LEVER          | LEVIER DE COMMANDE  | GASHEBEL          |
| 8       | P2020108   | 1   | NOITOLINO            | BOLI                    | BOULON              | STIFT             |
| 9       | P4010069   | 2   | MOLLA                | SPRING                  | RESSORT             | FEDER             |
| 10      | P2020106   | 1   | SCATOLA ACC. DX      | R.H. HOUSING            | BOÎTE DROITE        | SCHALE R.         |
| 11      | P1010078   | 1   | VITE                 | SCREW                   | VIS                 | SCHRAUBE          |
| 12      | P4010060   | 1   | PIASTRINA            | PLATE                   | PLAQUE              | PLATTE            |
| 13      | 1050003A1  | 1   | DADO                 | NUT                     | ÉCROU               | MUTTER            |
| 14      | P2020080   | 3   | FERMA CAVO           | CLIP                    | CLIP                | HALTER            |
| 15      | P5010030   | 1   | CAVO TRAZIONE        | TRACTION CABLE          | CÂBLE DE TRACTION   | ANTRIEBSKABEL     |
| 16      | P5020032   | 1   | CAVO ACCELERATORE    | THROTTLE CABLE          | CÂBLE DE GAZ        | GASKABEL          |
| 17      | 1050003A1  | 2   | DADO                 | NUT                     | ÉCROU               | MUTTER            |
| 18      | P1010065   | 1   | VITE                 | SCREW                   | VIS                 | SCHRAUBE          |
| 19      | 1050003A1  | 1   | DADO                 | NUT                     | ÉCROU               | MUTTER            |
| 20      | 1020013A1  | 1   | RONDELLA             | WASHER                  | RONDELLE            | SCHEIBE           |
| 21      | P1010203   | 1   | VITE                 | SCREW                   | VIS                 | SCHRAUBE          |
| 22      | P01068343  | 1   | SUPPORTO A RICCIOLIO | STARTER HOLDER          | SUPPORT             | HALTER            |
| 23      | 1050002A1  | 1   | DADO                 | NUT                     | ÉCROU               | MUTTER            |
| 24      | P5010069   | 1   | CAVO SYSTEM 2        | SYSTEM 2 CABLE          | CÂBLE SYSTEM 2      | SYSTEM 2 KABEL    |
| 25      | P3120103VE | 1   | STEGOLA SUP.         | UPPER HANDLE BAR        | GUIDON SUP.         | OB. FÜHRUNGSHOLM  |
| 26      | P00035099  | 1   | SCATOLA ACC. COMPL.  | THROTTLE HOUSING ASS. Y | BOÎTE DE GAZ COMPL. | GASGEHÄUSE KOMPL. |

Ihr Ersatzteilspezialist im Internet

Tav. 8

Stegola superiore e comandi, modello a trazione electric start IB-4238F  
Upper handle and controls, self-propelled model electric start IB-4238F  
Guidon supérieur et éléments de commande, modèle tracté electric start IB-4238F  
Lenkeroberteil und Bedienungselemente, Modell mit Radantrieb electric start IB-4238F





| REF. N° | PART. N°  | QTY | DESCRIZIONE          | DESCRIPTION          | DESCRIPTION            | BESCHREIBUNG      |
|---------|-----------|-----|----------------------|----------------------|------------------------|-------------------|
| 1       | P5030010  | 1   | BLOCCHETTO AVVIAMEN. | KEY SWITCH           | INTERRUPTEUR           | SCHLÜSSELSCHALTER |
| 2       | P5030011  | 2   | CHIAVE AVVIAMENTO    | KEY                  | CLAVETTE               | SCHLÜSSEL         |
| 3       | P1010077  | 2   | VITE                 | SCREW                | VIS                    | SCHRAUBE          |
| 4       | P5030008  | 1   | BATTERIA 12V         | BATTERY 12V          | BATTERIE 12V           | BATTERIE 12V      |
| 5       | P1020055  | 2   | RONDELLA             | WASHER               | RONDELLE               | SCHEIBE           |
| 6       | 1050002A1 | 2   | DADO                 | NUT                  | ÉCROU                  | MUTTER            |
| 7       | P5030009  | 1   | CARICA BATTERIA      | BATTERY CHARGER      | CHARGEUR D'ACCUMULAT.  | LADEGERÄT         |
| 7       | P5030013  | 1   | CARICA BATTERIA (GB) | BATTERY CHARGER (GB) | CHARGEUR D'ACCUM. (GB) | LADEGERÄT (GB)    |
| 8       | P5030006  | 1   | CAVO ELETTRICO       | ELECTRIC CABLE       | CÂBLE ÉLECTRIQUE       | KABEL             |



Tav. 1

Vista generale  
Complete machine  
Vue d'ensemble  
Gesamtansicht

